

# FSDATA™ DESKTOP INSTRUMENT MANAGER

## Applications

- Wastewater
- Industrial Water
- Collection Systems



## Gets you on your way. Faster.

When it comes to programming sewer flow monitoring instruments, speed and accuracy are of the essence. Hach's new free software, FSDATA Desktop Instrument Manager, is designed to quickly perform all field-focused programming and troubleshooting activities for the Hach FL900 Series Flow Logger.

It dramatically reduces programming time, using a dashboard approach to limit the number of clicks it takes to get the job done. And because the software is highly-intuitive, it ensures instruments are calibrated right the first time, eliminating human errors that lead to bad data and corrective return visits. Productivity just got a major boost with FSDATA Desktop Instrument Manager.



## Key Features & Benefits

- **Dashboard**  
Shows you everything you need to know to assess and improve the meter's programming in a single screen.
- **Intuitive User Interface**  
Software mimics actual workflow, streamlining your work to minimize steps and reduce the chance for programming errors.
- **Setup Wizards**  
Take the guesswork out of instrument programming by guiding you step-by-step with clear instructions and illustrations.
- **Layered Error Reduction**  
FSDATA Desktop automatically checks for errors on individual programming stages as well as on the full program, providing you with complete confidence in your final set-up.

## Program Features

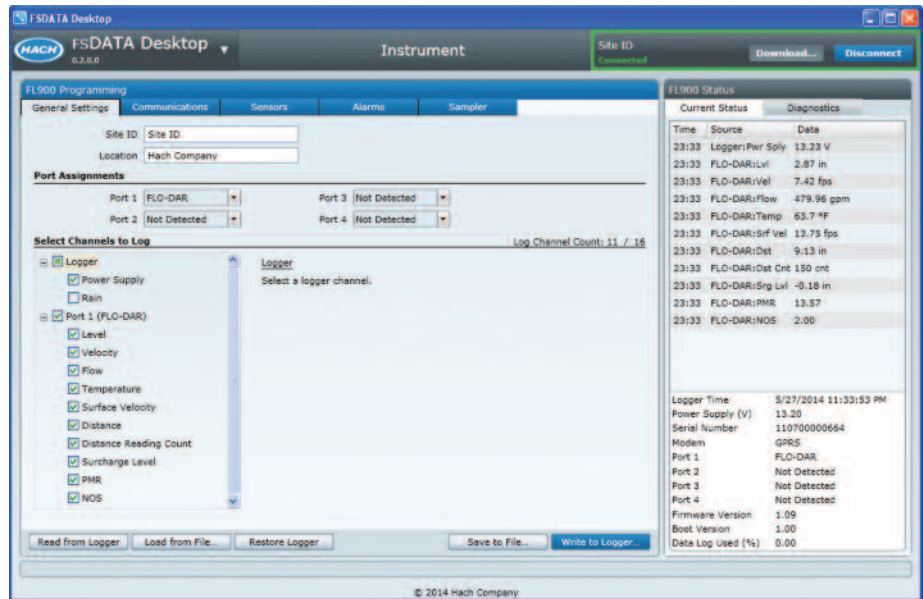
- Instrument Dashboard
  - Current Status Quick View
  - Logger and Sensor Programming
  - Sensor Setup Wizards
  - Real-Time Measurement
  - Sensor Diagnostics Tool
  - Modem Programming and Diagnostics
- Logger Downloading
  - Integrated File with Program, Logged Data and Diagnostic Information
  - CSV or TSV Export Upon Download
- Data Viewing and Assessment
  - Graphs with Modern Drill-down Tools
  - Tabular Data
  - Report Generation
- Instrument Tools
  - Firmware Upgrades
  - Restore Factory Defaults
- Preferences Stored
  - Units
  - Download Options

## Product Compatibility

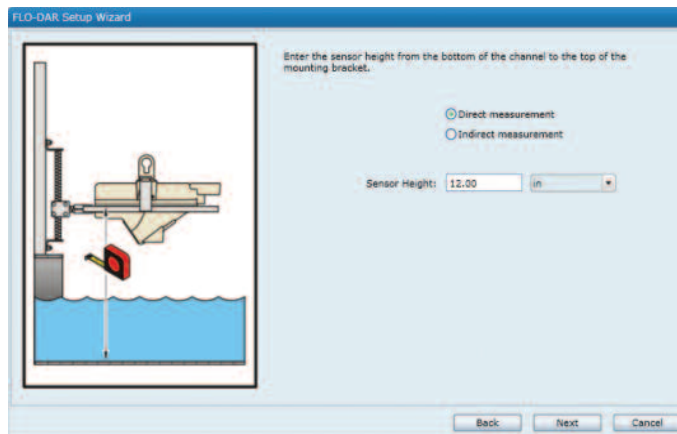
- Hach FL900 Series Flow Loggers and Sensors

## Minimum System Requirements

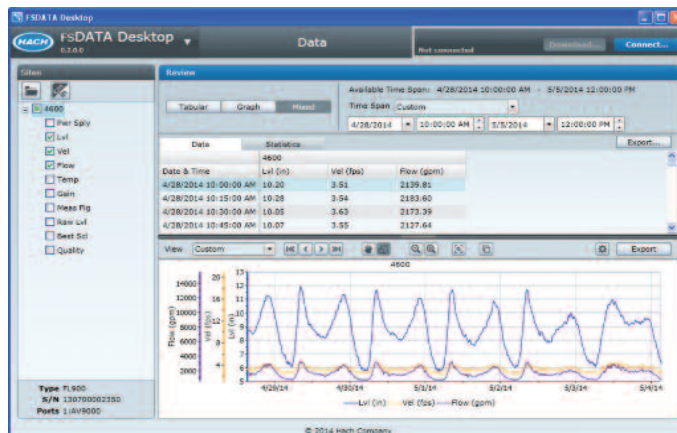
- Microsoft Windows Vista or later (Windows Phone/RT are not supported)
- Microsoft .NET 4.0 Framework
- Effective screen resolution of 1024 x 768 or higher
- 25 MB hard disk space



Instrument dashboard to quickly evaluate and improve a flow meter's programming.



Sensor setup wizards for guided programming and calibration of sensors.



Graph and tabular views for data assessment with intuitive and modern drill-down tools.

## HACH COMPANY World Headquarters: Loveland, Colorado USA

United States: 800-368-2723 tel 970-619-5150 fax hachflowsales@hach.com  
 Outside United States: 970-622-7120 tel  
**hachflow.com**

LIT2832 Rev 1  
 Printed in U.S.A.

©Hach Company, 2016. All rights reserved.

In the interest of improving and updating its equipment,  
 Hach Company reserves the right to alter specifications to equipment at any time.



Be Right™