

Surcharge-Velocity Sensor (SVS) to Flo-Dar Installation

Safety Information

Please read this entire document before unpacking, setting up, or operating this equipment.

Make sure that the protection provided by this equipment is not impaired, do not use or install this equipment in any manner other than that specified in this document.

Precautionary Labels

Read all labels and tags attached to the instrument. Personal injury or damage to the instrument could occur if not observed.



Electrical equipment marked with this symbol may not be disposed of in European public disposal systems after 12 August of 2005. In conformity with European local and national regulations (EU Directive 2002/96/EC), European electrical equipment users must now return old or end-of life equipment to the Producer for disposal at no charge to the user.

Note: For return for recycling, please contact the equipment producer or supplier for instructions on how to return end-of-life equipment, producer-supplied electrical accessories, and all auxiliary items for proper disposal.

General overview

This document gives the instructions on how to attach an SVS sensor to a Flo-Dar when a shipment is sent with the Flo-Dar and SVS sensor disconnected. Ignore this document, if a shipment is received with the SVS already attached to the Flo-Dar.

This document also gives the instructions on how to add an SVS to an existing Flo-Dar in the field.

Attach the SVS to the Flo-Dar

To attach a SVS to an existing Flo-Dar, holes must be drilled on the Flo-Dar. The SVS clamp is not used (ignore step 5). To add drill holes, put the SVS sensor on the Flo-Dar. Use the SVS sensor as a template to add the holes on the Flo-Dar. Drill two screw holes with a diameter of 0.159 and a depth of 0.75 inches (Figure 1, item 9). Do not drill through the Flo-Dar enclosure.

Procedure to attach the SVS to the Flo-Dar:

1. Remove the Flo-Dar handle (Figure 1, item 1 and 2).
2. Put the SVS on the Flo-Dar with the holes on the SVS aligned with the drill holes on the two sides of the Flo-dar (Figure 1, item 9).
3. Attach the SVS to the Flo-dar with the 3/4-inch screws.
4. Put the SVS cable through the handle.
5. Remove the SVS cable clamp screws. Attach the SVS cable with the cable clamp and the 1-1/4 inch screws (Figure 1, item 3 and 4)
6. Loosen the Flo-Dar cable clamp screws and install the Flo-Dar handle. Adjust the Flo-Dar cable and tighten the Flo-Dar cable clamp screws (Figure 1, item 6).
7. Attach the Flo-Dar cable and the SVS cable with zip-ties. Start 1 inch away from the Flo-Dar handle, attach a zip-tie every 5 feet (Figure 1, item 5).

Surcharge-Velocity Sensor (SVS) to Flo-Dar Installation

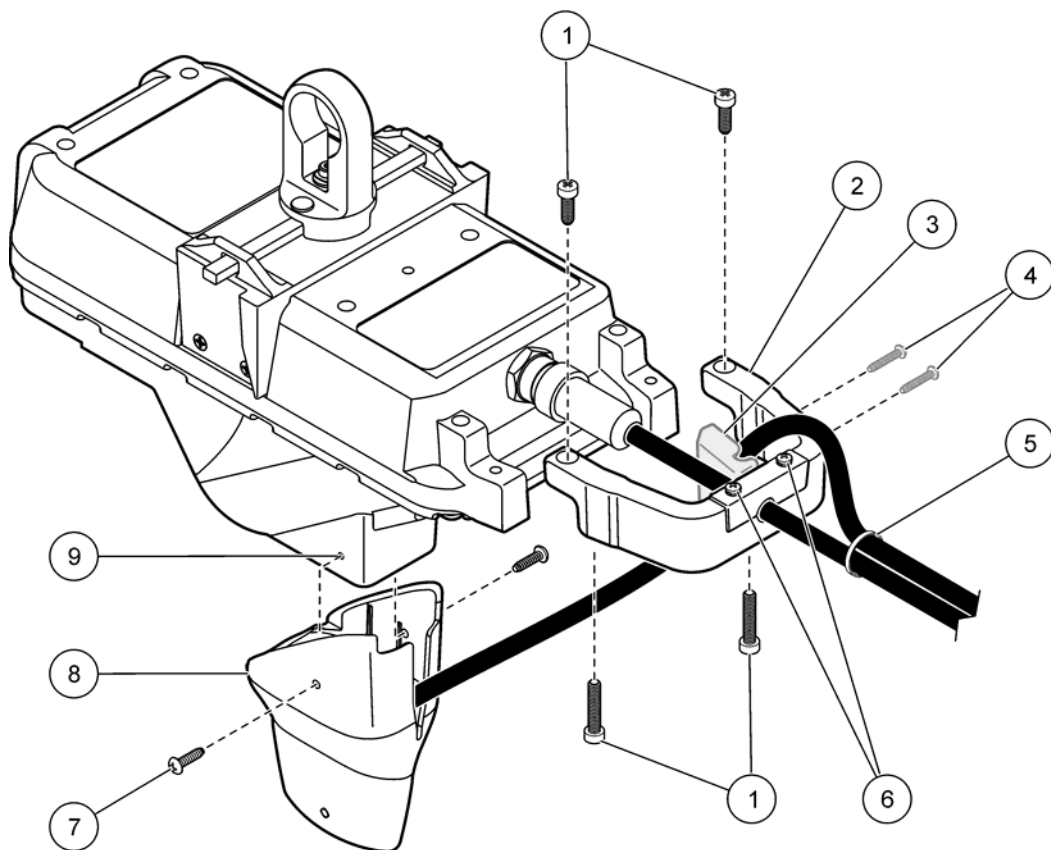


Figure 1 SVS to Flo-Dar assembly

1	Handle screws	6	Flo-Dar cable clamp screws
2	Handle	7	Screws
3	SVS cable clamp	8	SVS
4	SVS cable clamp screws	9	Screw hole depth and diameter $\varnothing 0.159 \times 0.75$ deep (2x)
5	Cable tie		



FOR TECHNICAL ASSISTANCE, PRICE INFORMATION AND ORDERING:

In the U.S.A. – Call toll-free 800-368-2723

Outside the U.S.A. – Contact the Marsh-McBirney office or distributor serving you.

On the Worldwide Web – www.marsh-mcBirney.com

E-mail for Support – service@marsh-mcBirney.com E-mail for Sales – sales@marsh-mcBirney.com

MARSH McBIRNEY-HACH COMPANY

4539 Metropolitan Court

Frederick, MD 21704-9452, U.S.A.

Telephone: (301) 874-5599

FAX: (301) 874-8459